

Latticist Frogs demo

A demonstration of the **latticist** package

Felix Andrews

November 2008

Introduction

The **latticist** package provides a graphical user interface for exploratory visualisation in R. It is primarily an interface to the **lattice** graphics system, but also produces displays from the **vcd** package for categorical data.

While **latticist** is normally used interactively (as a GUI), this document gives a sequence of the plots produced, where each step can be taken in the graphical user interface. Note that the displays can be customised by editing the calls used to generate them (see appendix for full code).

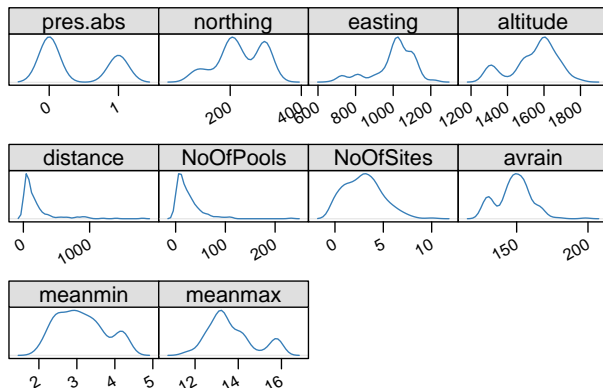
The dataset here is `frogs`, available in the **DAAG** package. The data are on the distribution of the Southern Corroboree frog, which occurs in the Snowy Mountains area of New South Wales, Australia. – *from ?frogs*

Initial display

```
> spec <- list()
```

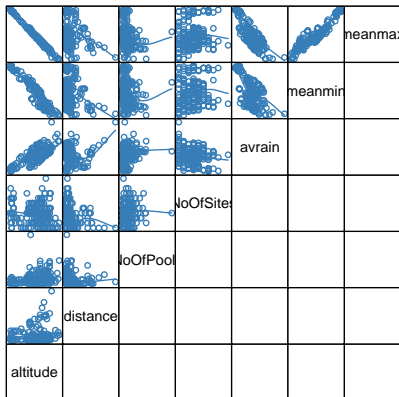
```
> latticist(frogs, spec = spec)
```

```
marginal.plot(frogs, data = frogs, sub .... → p. 11
```



Scatterplot matrix with subset of variables

```
> spec <- list(varSubset = c("altitude", "distance",  
  "NoOfPools", "NoOfSites", "avrain", "meanmin",  
  "meanmax"), defaultPlot = "splom")  
splom(~frogs[c("altitude", "distance", .... → p. 12
```



Scatter Plot Matrix

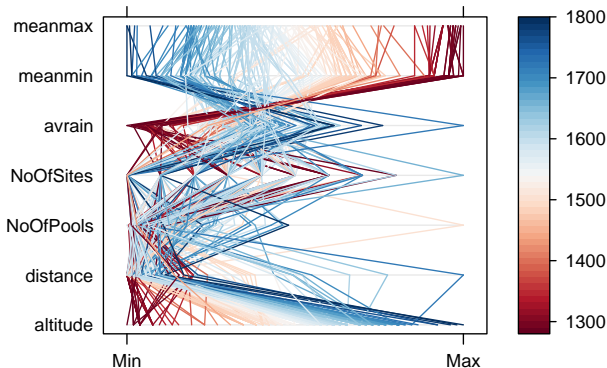
Parallel plot with color (groups) variable

```
> spec$groups <- "altitude"
```

```
> spec$defaultPlot <- "parallel"
```

```
parallel(~frogs[c("altitude", "distance.... → p. 13
```

Parallel plot grouped by altitude



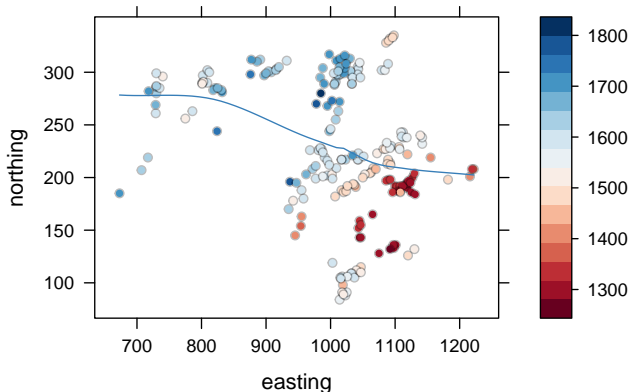
Set x and y variables

```
> spec$yvar <- "northing"
```

```
> spec$xvar <- "easting"
```

```
levelplot(altitude ~ easting * northing.... → p. 14
```

northing vs easting by altitude

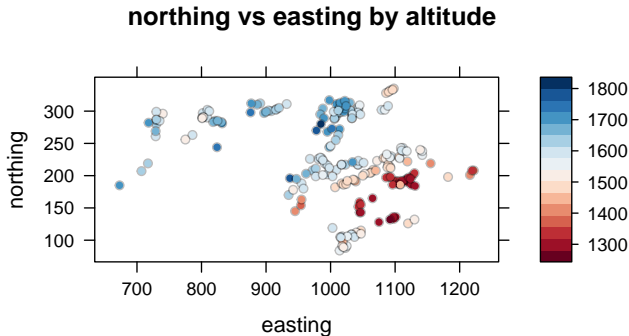


Isometric scale, remove lines

```
> spec$aspect <- "iso"
```

```
> spec$doLines <- FALSE
```

```
levelplot(altitude ~ easting * northing.... → p. 15
```

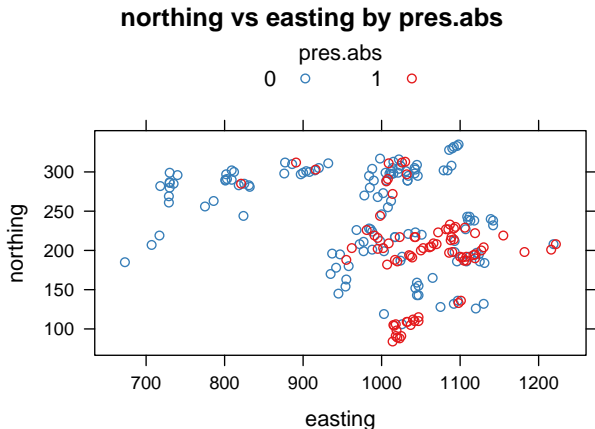


N = 212, 2008–11–14, R 2.8.0Patched

Set grouping variable

```
> spec$groups <- "pres.abs"
```

```
xyplot(northing ~ easting, data = frogs.... → p. 16
```



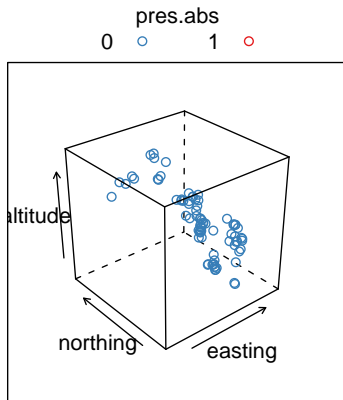
N = 212, 2008–11–14, R 2.8.0Patched

Set z variable

```
> spec$zvar <- "altitude"
```

```
cloud(altitude ~ easting * northing, da.... → p. 17
```

altitude vs easting and northing by pres.abs



N = 212, 2008-11-14, R 2.8.0Patched

Details

The results in this document were obtained using R 2.8.0 with the packages **lattice** 0.9–42, **lattice** 0.17–15, and **latticeExtra** 0.5–5. R itself and all packages used are available from CRAN at <http://CRAN.R-project.org/>.

For an excellent introduction to and coverage of Lattice:

Sarkar, Deepayan (2008). *Lattice: Multivariate Data Visualization with R*, Springer. <http://lmdvr.r-forge.r-project.org/>

Appendix: Code

Code to produce the plot on page 3:

```
marginal.plot(frogs, data = frogs, sub = list(
  "N = 212, 2008-11-14, R 2.8.0Patched",
  x = 0.99, just = "right", cex = 0.7,
  font = 1))
```

Appendix: Code

Code to produce the plot on page 4:

```
splom(~frogs[c("altitude", "distance",  
"NoOfPools", "NoOfSites", "avrain",  
"meanmin", "meanmax")], data = frogs,  
  panel = function (...)  
  {  
    try(panel.xyplot(...))  
  }, type = c("p", "smooth"), lower.panel = expression,  
  varname.cex = 0.7, pscales = 0,  
  par.settings = simpleTheme(cex = 0.5),  
  sub = list("N = 212, 2008-11-14, R 2.8.0Patched",  
    x = 0.99, just = "right", cex = 0.7,  
    font = 1))
```

Appendix: Code

Code to produce the plot on page 5:

```
parallel(~frogs[c("altitude", "distance",  
"NoOfPools", "NoOfSites", "avrain",  
"meanmin", "meanmax")], data = frogs,  
  groups = n.level.colors(altitude),  
  panel = function (... , col, groups,  
    subscripts)  
  {  
    col <- groups[subscripts]  
    panel.parallel(... , col = col,  
      subscripts = subscripts)  
  }, legend = simpleColorKey(with(frogs,  
  altitude)), main = "Parallel plot grouped by altitude",  
par.settings = simpleTheme(), sub = list(  
  "N = 212, 2008-11-14, R 2.8.0Patched",  
  x = 0.99, just = "right", cex = 0.7,  
  font = 1))
```

Appendix: Code

Code to produce the plot on page 6:

```
levelplot(altitude ~ easting * northing,  
  data = frogs, main = "northing vs easting by altitude",  
  xlab = "easting", ylab = "northing",  
  panel = panel.levelplot.points,  
  prepanel = try.prepanel.loess, jitter.x = TRUE,  
  type = c("p", "smooth"), plot.args = list(panel.error =  
  par.settings = simpleTheme(), sub = list(  
    "N = 212, 2008-11-14, R 2.8.0Patched",  
    x = 0.99, just = "right", cex = 0.7,  
    font = 1))
```

Appendix: Code

Code to produce the plot on page 7:

```
levelplot(altitude ~ easting * northing,  
  data = frogs, main = "northing vs easting by altitude",  
  xlab = "easting", ylab = "northing",  
  panel = panel.levelplot.points,  
  prepanel = prepanel.default.xyplot,  
  aspect = "iso", par.settings = simpleTheme(),  
  sub = list("N = 212, 2008-11-14, R 2.8.0Patched",  
    x = 0.99, just = "right", cex = 0.7,  
    font = 1))
```

Appendix: Code

Code to produce the plot on page 8:

```
xyplot(northing ~ easting, data = frogs,  
       groups = pres.abs, main = "northing vs easting by pres.  
       xlab = "easting", ylab = "northing",  
       aspect = "iso", par.settings = simpleTheme(),  
       auto.key = list(title = "pres.abs",  
                        cex.title = 1, columns = 2),  
       sub = list("N = 212, 2008-11-14, R 2.8.0Patched",  
                  x = 0.99, just = "right", cex = 0.7,  
                  font = 1))
```


Appendix: Code

Code to produce the plot on page 9:

```
cloud(altitude ~ easting * northing,  
      data = frogs, groups = pres.abs,  
      main = "altitude vs easting and northing by pres.abs",  
      xlab = "easting", ylab = "northing",  
      par.settings = simpleTheme(), auto.key = list(  
        title = "pres.abs", cex.title = 1,  
        columns = 2), sub = list("N = 212, 2008-11-14, R 2.  
x = 0.99, just = \"right\", cex = 0.7,  
font = 1))
```