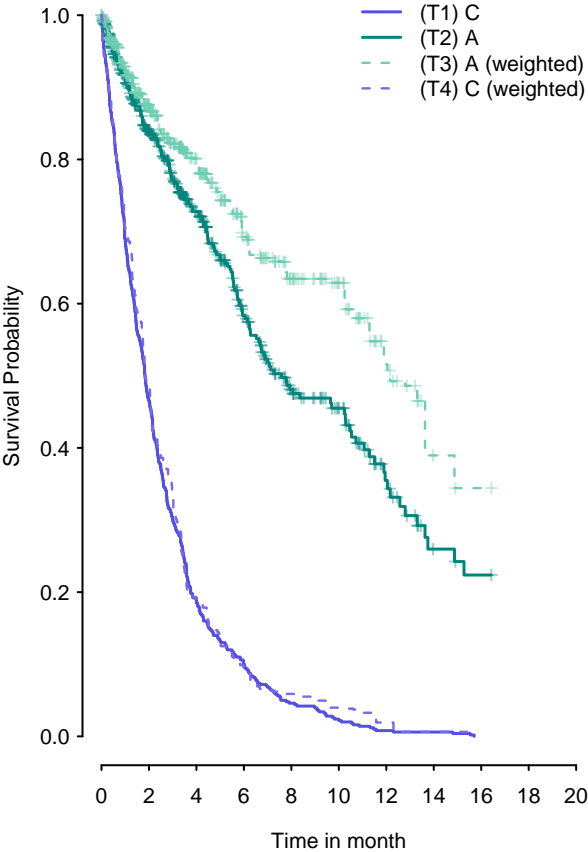


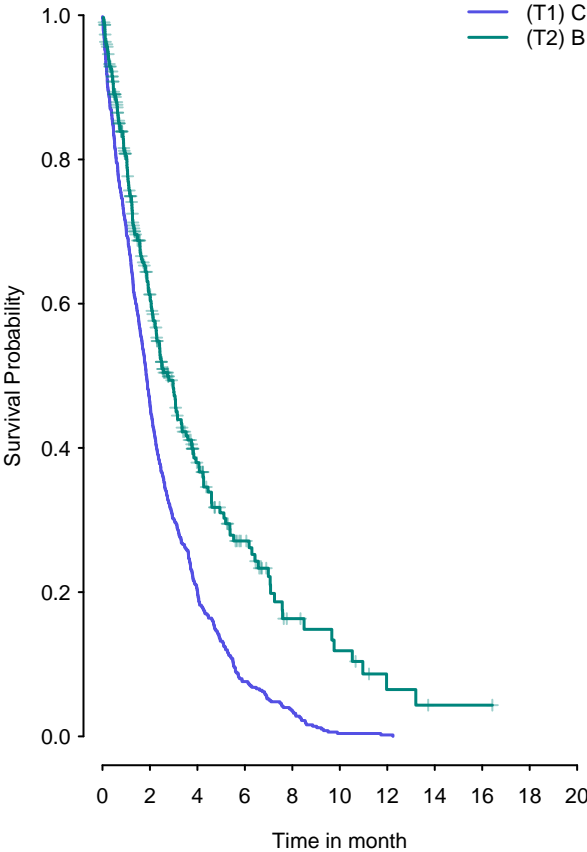
Kaplan–Meier Curves
(A vs C) in the IPD trial
Endpoint:Overall Survival



Number at risk												
T1	500	233	93	50	23	11	4	3	n/a	n/a	n/a	
T2	500	319	211	130	84	61	31	15	12	n/a	n/a	
T3	173.4	120.3	86.5	61.2	44.2	35.1	20.7	11.5	10.1	n/a	n/a	
T4	173.4	84.1	33.1	15.8	10.2	6.7	3.3	1.1	n/a	n/a	n/a	

Note: Number at risk for adjusted/weighted treatment arm is the

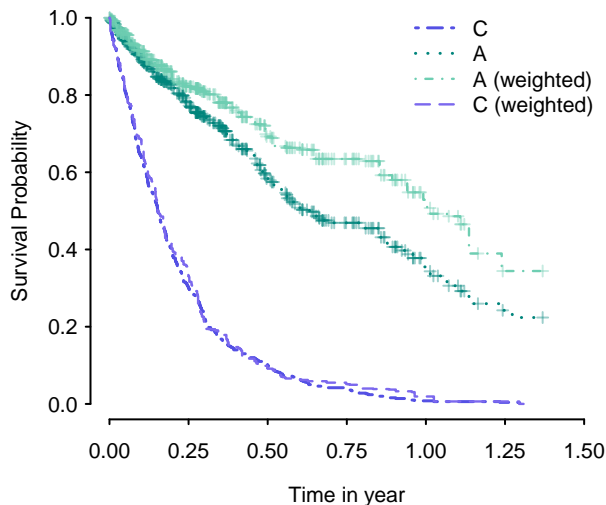
Kaplan–Meier Curves
(B vs C) in the AgD trial
Endpoint:Overall Survival



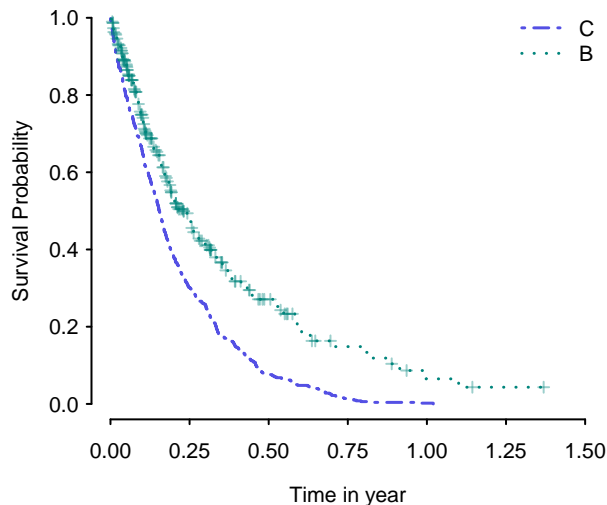
Number at risk												
T1	500	230	101	38	18	2	1	n/a	n/a	n/a	n/a	
T2	300	136	58	30	12	8	3	1	1	n/a	n/a	

Note: Number at risk for adjusted/weighted treatment arm is the

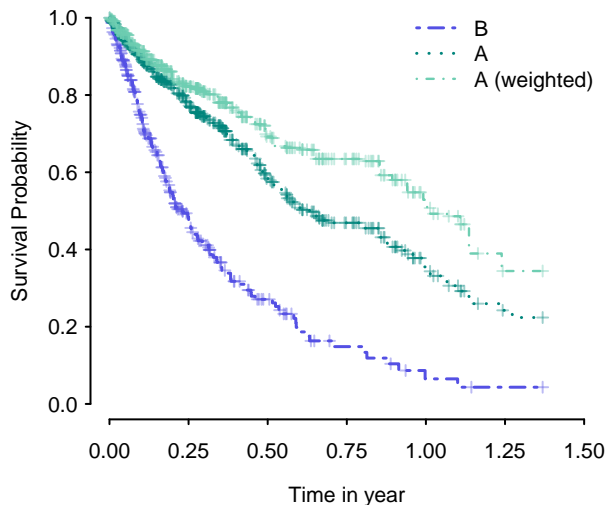
**Kaplan–Meier Curves
(A vs C) in the IPD trial
Endpoint:Overall Survival**



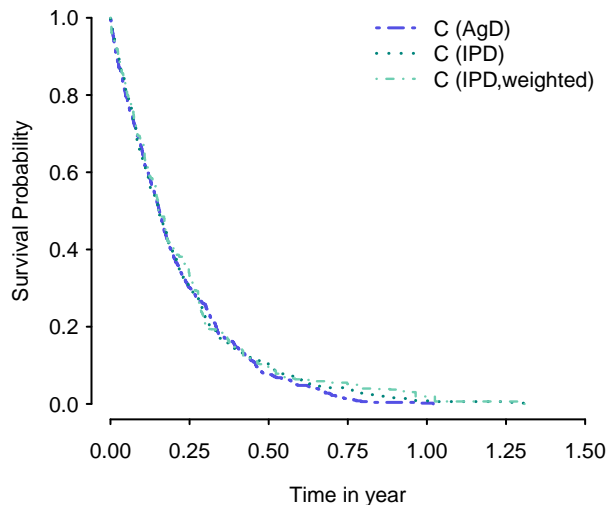
**Kaplan–Meier Curves
(B vs C) in the AgD trial
Endpoint:Overall Survival**



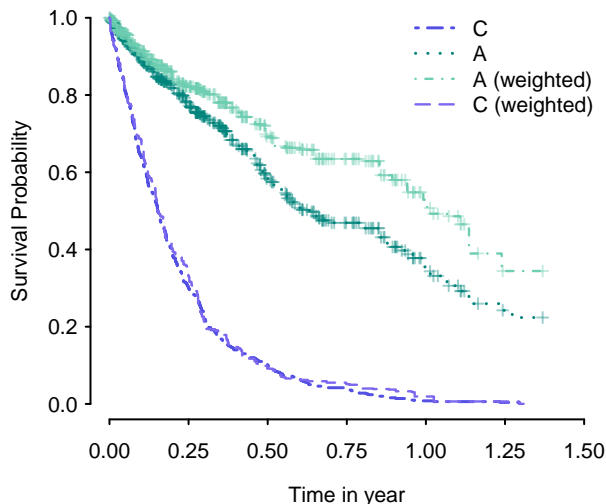
**Kaplan–Meier Curves
(A vs B)
Endpoint:Overall Survival**



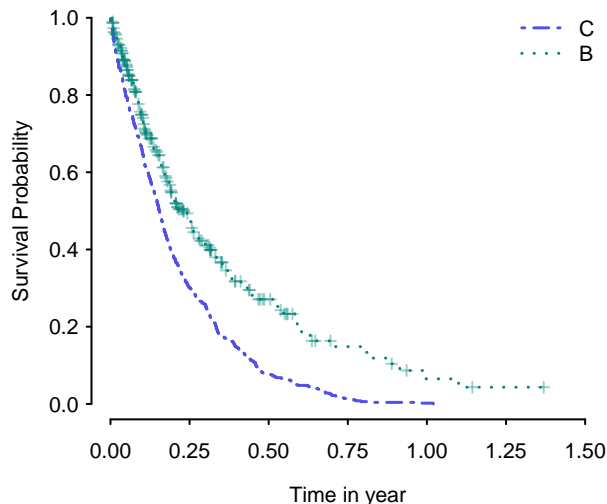
**Kaplan–Meier Curves of Common Comparator
C(IPD vs AgD Trial)
Endpoint:Overall Survival**



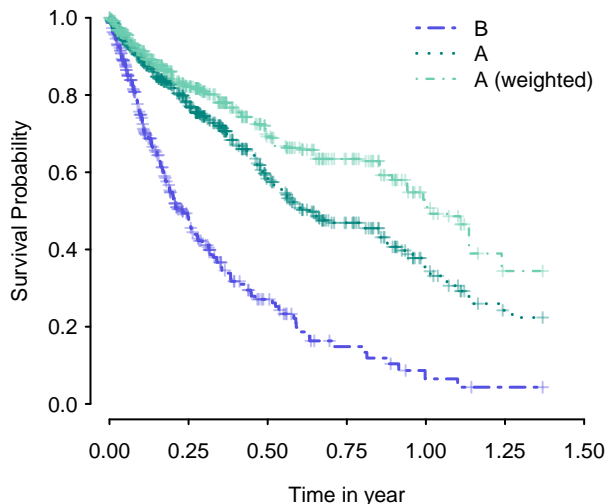
**Kaplan–Meier Curves
(A vs C) in the IPD trial
Endpoint:Overall Survival**



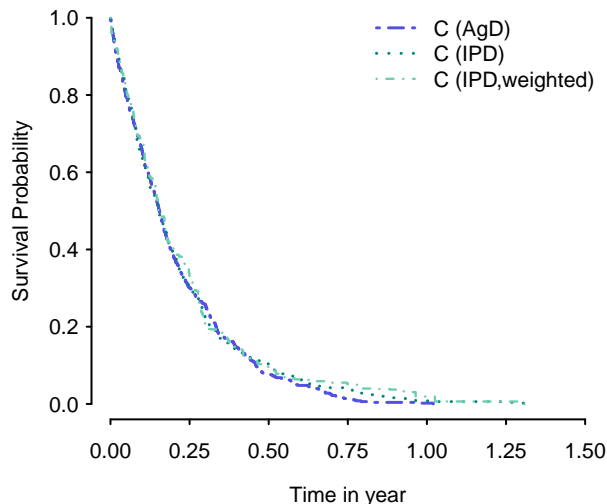
**Kaplan–Meier Curves
(B vs C) in the AgD trial
Endpoint:Overall Survival**



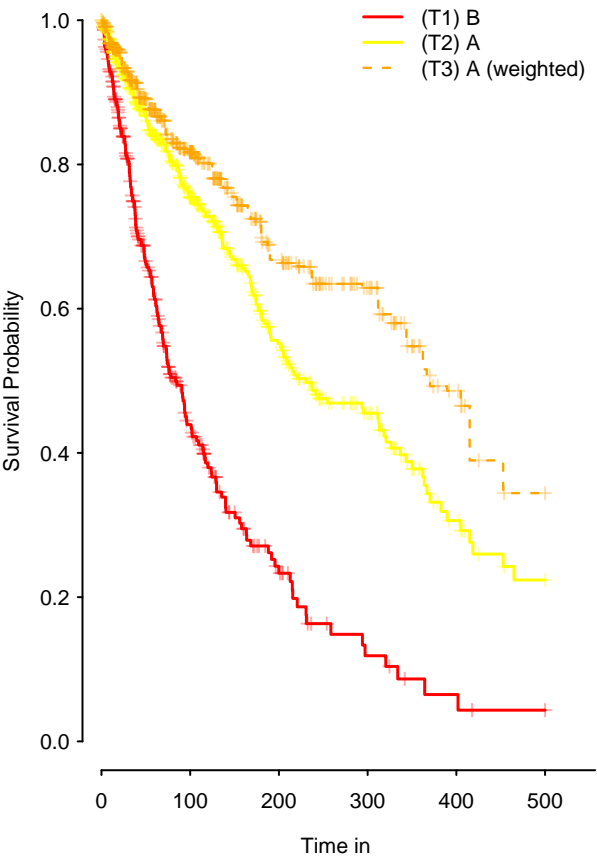
**Kaplan–Meier Curves
(A vs B)
Endpoint:Overall Survival**



**Kaplan–Meier Curves of Common Comparator
C(IPD vs AgD Trial)
Endpoint:Overall Survival**



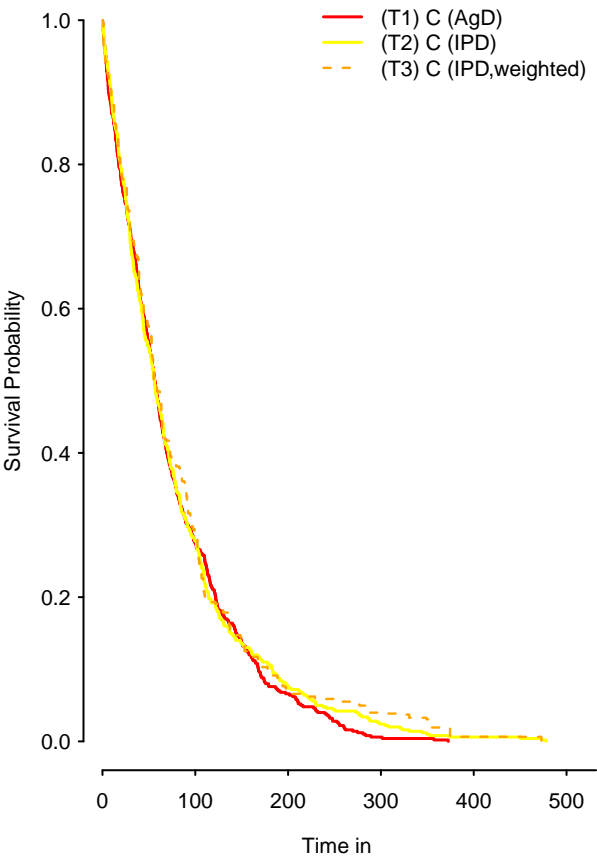
Kaplan–Meier Curves
(A vs B)
Endpoint:PFS



Number at risk						
T1	300	79	24	8	3	n/a
T2	500	246	119	63	23	n/a
T3	173.4	100.1	58.3	36.3	14.4	n/a

Note: Number at risk for adjusted/weighted treatment arm is the

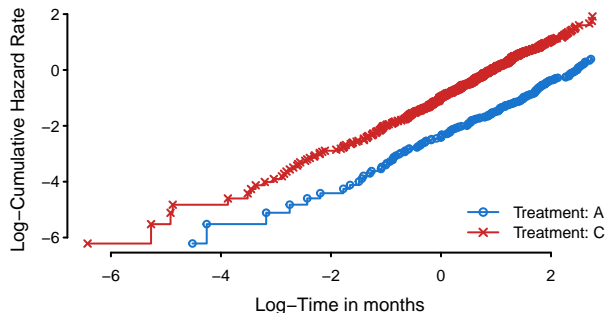
Kaplan–Meier Curves of Common Comparator
C(IPD vs AgD Trial)
Endpoint:PFS



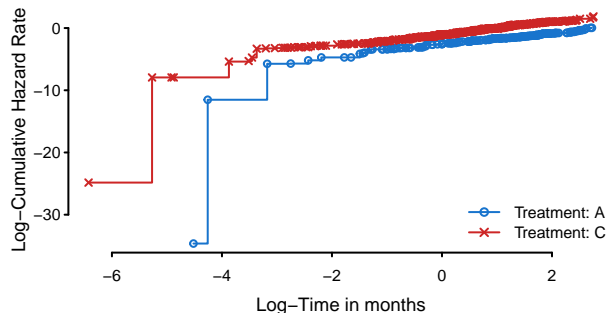
Number at risk						
T1	500	138	33	3	n/a	n/a
T2	500	139	37	12	3	n/a
T3	173.4	50.7	12	6.9	1.1	n/a

Note: Number at risk for adjusted/weighted treatment arm is the

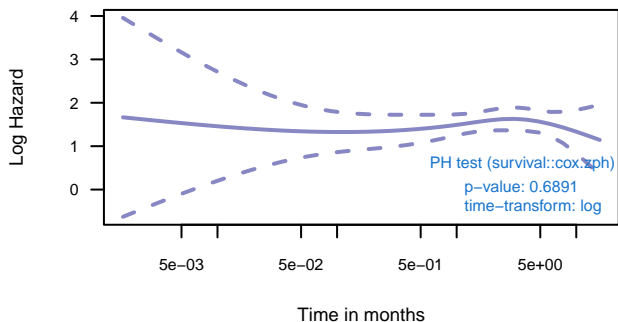
Log Cumulative Hazard versus Log Time
Endpoint: Time to Event Endpoint
(Before Matching)



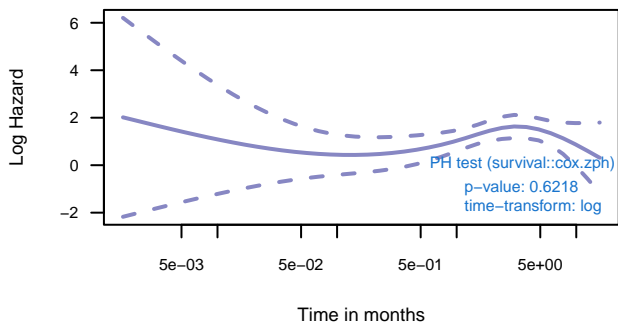
Log Cumulative Hazard versus Log Time
Endpoint: Time to Event Endpoint
(After Matching)



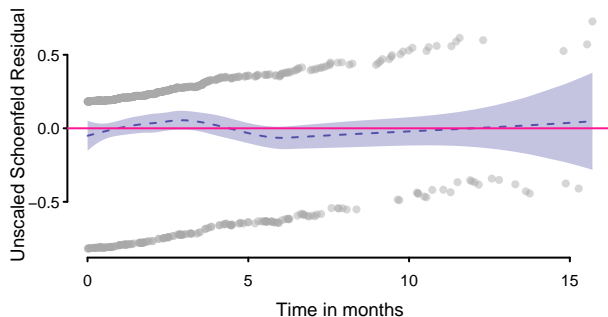
Time-dependent Hazard function (scaled Schoenfeld residual)
Endpoint: Time to Event Endpoint
(Before Matching)



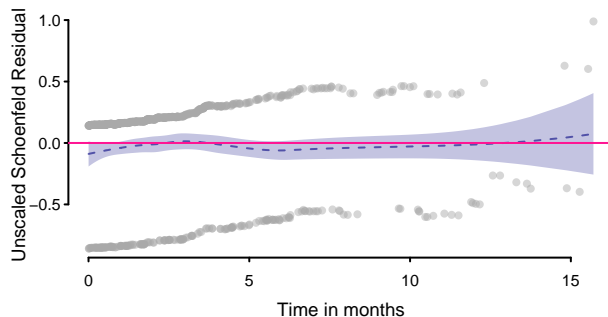
Time-dependent Hazard function (scaled Schoenfeld residual)
Endpoint: Time to Event Endpoint
(After Matching)



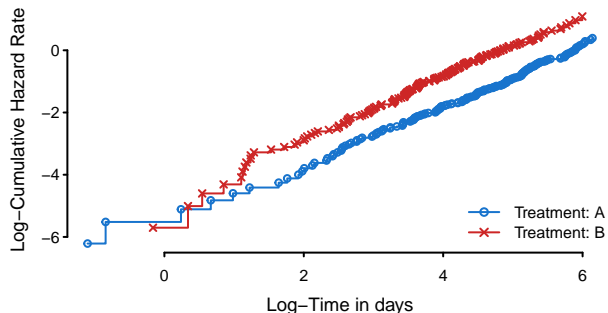
Unscaled Schoenfeld Residual
Endpoint: Time to Event Endpoint
(Before Matching)



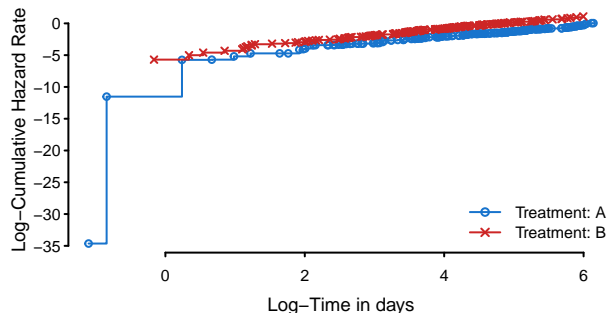
Unscaled Schoenfeld Residual
Endpoint: Time to Event Endpoint
(After Matching)



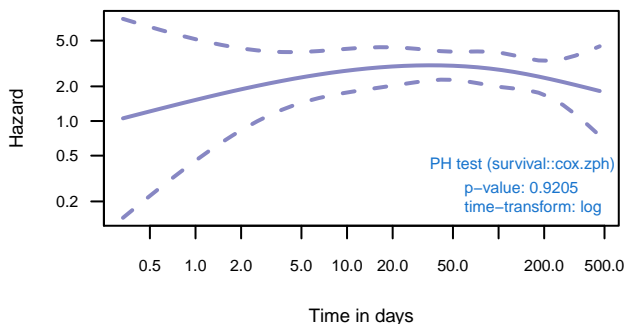
Log Cumulative Hazard versus Log Time
Endpoint: Time to Event Endpoint
(Before Matching)



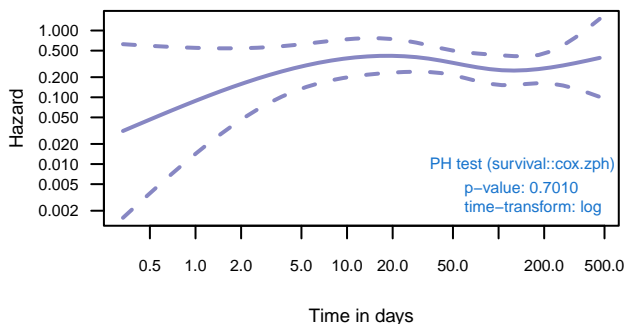
Log Cumulative Hazard versus Log Time
Endpoint: Time to Event Endpoint
(After Matching)



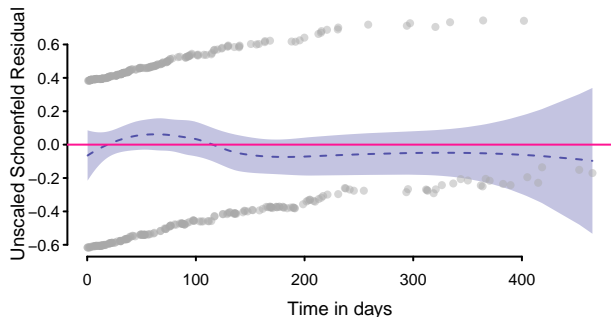
Time-dependent Hazard function (scaled Schoenfeld residual)
Endpoint: Time to Event Endpoint
(Before Matching)



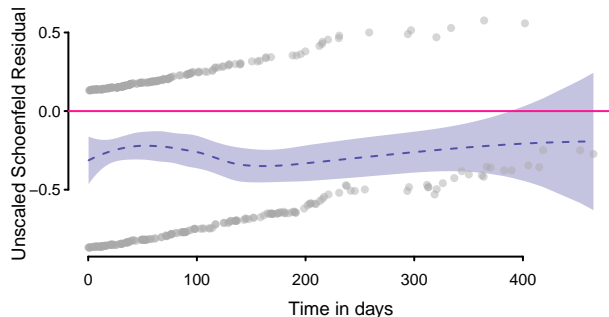
Time-dependent Hazard function (scaled Schoenfeld residual)
Endpoint: Time to Event Endpoint
(After Matching)



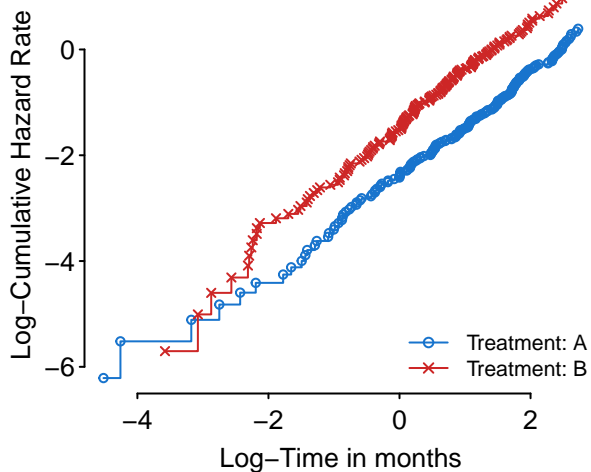
Unscaled Schoenfeld Residual
Endpoint: Time to Event Endpoint
(Before Matching)



Unscaled Schoenfeld Residual
Endpoint: Time to Event Endpoint
(After Matching)



Log Cumulative Hazard versus Log Time
Endpoint: OS
(Before Matching)



Unscaled Schoenfeld Residual
Endpoint: OS
(Before Matching)

